



Nasty Minerals -

Vortex® designs and manufactures tough slide gates and diverters for abrasive duty applications!

COAL - Lignite

36" x 54" Vortex® Seal Tite™ Diverter Valve

- 7' 0" tall 4,200 pounds
- polymer lined
- material size: 8" minus

Valve features:

- unique product flow pattern through valve
- leading edge of blade protected from wear
- access panels allow inspection / maintenance without having to remove valve



72" Vortex® Maintenance Gate

- 175" x 88" overall 5,500 lbs
- material size: 2" minus

Valve features:

- interior seals may be maintained with valve in place
- dust tight to atmosphere and valve cavity (OSHA clean air requirement)

COAL - Anthracite

36" x 26" Vortex® Seal Tite™ Diverter Valve

- 69" x 40" x 38" overall dimensions
- material size: 2" minus

Valve features:

- chromium carbide replaceable liners for abrasion resistance



Frac Sand

14" Vortex® Aggregate Diverter Valve™

- 36" x 24" x 22" overall dimensions
- 240 lbs.



Gravel - Dryer Fines & Sand

14" Vortex® Aggregate Diverter Valve™

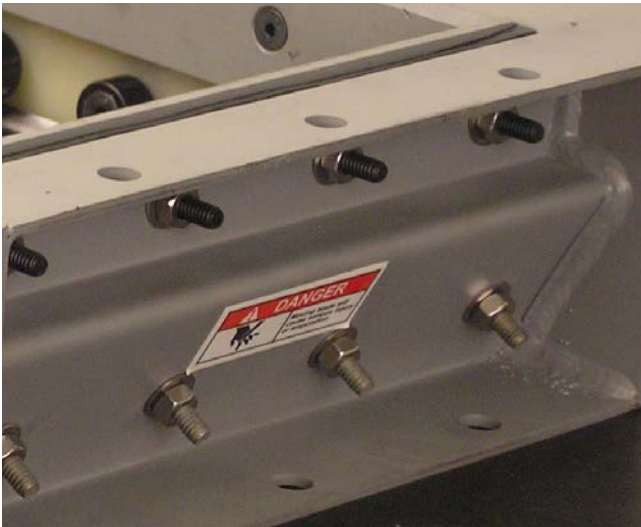
- 36" x 24" x 22" overall dimensions
- 240 lbs.

Both valves feature:

- dead pocket deflector to minimize wear through inlet
- honeycomb "rock box" liners to address abrasion within the valve
- durable rubber bucket seal to seal material across closed internal chute



Metal Alloys



12" Vortex® Titan Slide Gate™

Valve features:

- AR blade and interior liners
- displacement pocket on closing end
- bonnet seals that may be maintained with valve in place
- bonnet purge (fine materials)

Phyllosilicates



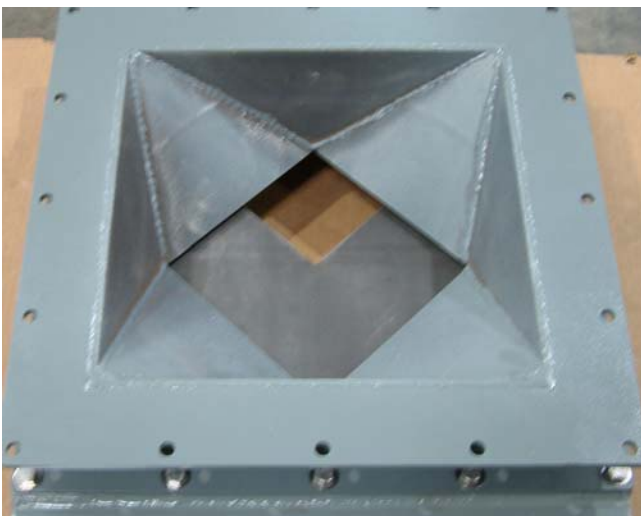
12" Vortex® HDP® Slide Gate™

- material handled: 320 brinell

Valve features:

- unique closing action - blade does not pack material into end seal
- can isolate pressures up to 75 psig.

Roofing Granules



14" Vortex® Special Aggregate Gate™

Valve features:

- "V" notched blade matching a special "diamond shaped" inlet transition. The resulting shape of the matching patterns make it easier to calibrate metering of material through the gate. Material discharges through the center of the valve opening.

Silica sand

12" Vortex® Aggregate Diverter™

Valve features:

- honeycomb "rock box" liners



12" Vortex® 3-way Seal Tite Diverter™

Valve combination features:

- flexibility of diverting from one source to any of four destinations



8" Vortex® Aggregate Diverter – Multi-Port

- beneath screener – 4 grades
- allows automation of former hose station "malfunction junction"

Valve stack-up features:

- the 16 valve stack up allows screened, graded sand to be conveyed by gravity from any of four sources to any of five destinations, simultaneously.
- offers employee safety and positive diversion of material handled



www.vortexvalves.com



Valves

Handling the world's dry bulk solids®

